



Castell
Homes

St Peters Close
Llanbedr, Powys



Local Area Information

We have two new build family homes for sale in the highly sought after village of Llanbedr. Llanbedr is located in idyllic rural surroundings 2.5 miles from the vibrant market town of Crickhowell, with its independent shops and prestigious high school.

Abergavenny and Brecon are circa 7 mile and 15 mile drive respectively, and have excellent amenities including supermarkets, cinemas, theatres, libraries, sports centres and doctor/dentist surgeries.

There are good links to Cardiff and London, with the M4, M50, A465 and national railway network all easily accessible via Abergavenny.



What's on offer?

Castell Homes have 2 brand new three bedroom detached homes for sale.

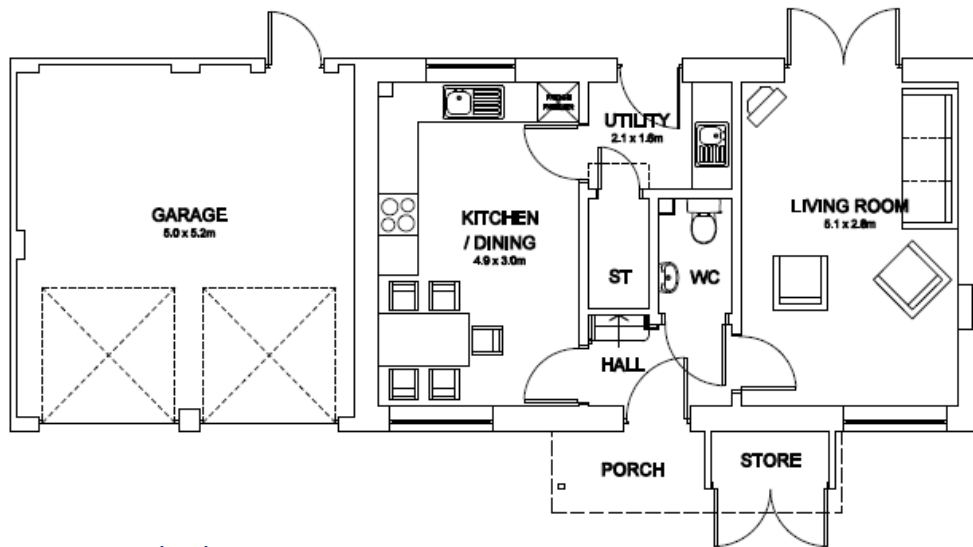
The 'Crickhowell' and 'Beacons' homes are part of a small new development in the picturesque village of Llanbedr. The properties offer well designed accommodation in an attractive cul-de-sac location and are built to an exceptionally high standard. The properties benefit from the following features:

- A 10 year build warranty
- Private secure gardens to rear
- Two parking spaces
- Built-in stores to front
- Oil fired central heating
- Modern open plan kitchen diner with integrated oven, hob and cooker hood
- Separate Utility/Boot room
- Family bathroom on 1st floor and ensuite to master bedroom
- Ground floor w/c
- The Crickhowell house type includes a double garage



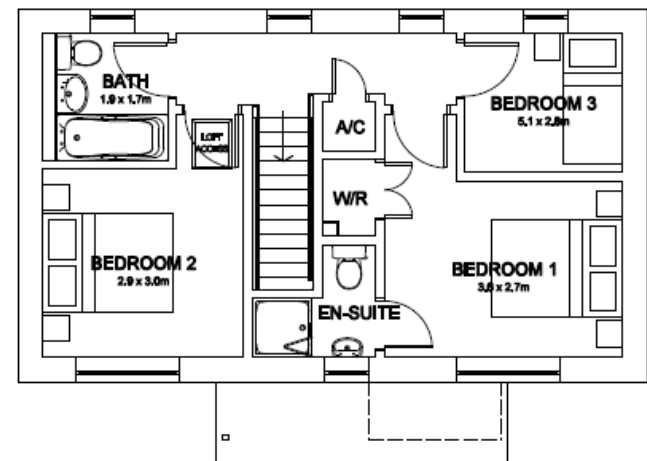


The 'Crickhowell' - £289,950



Ground Floor

Kitchen/Dining Area	Lounge Area
4.9m x 3.0m	5.1 x 2.8m
Utility Area	Garage
2.1m x 1.6m	5.0m x 5.2m



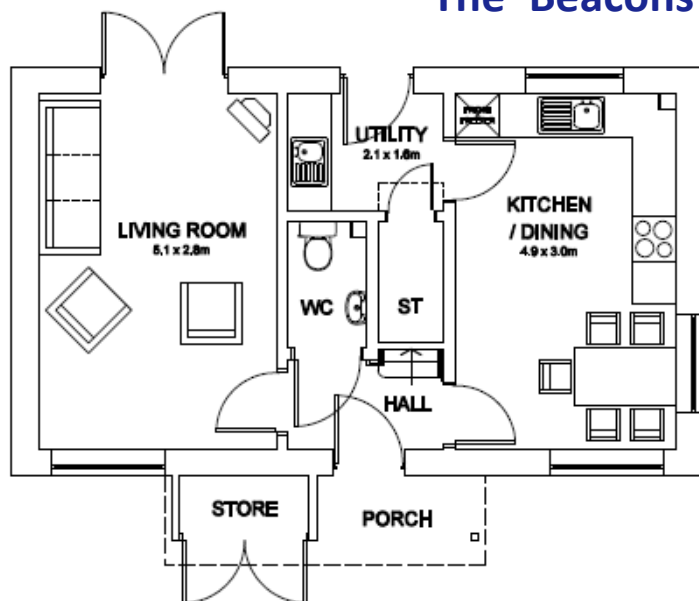
First Floor

Bathroom	Bedroom 2
1.9m x 1.7m	2.9m x 3.0m
Bedroom 1	Bedroom 3
3.6m x 2.7m	5.1m x 2.8m

The floor plans depict a typical layout of the house types. For exact plot specification, details of external and internal finishes, dimensions and floor plan differences consult your Sales Executive. All dimensions are + or – 50mm and floor plans are not shown to scale.

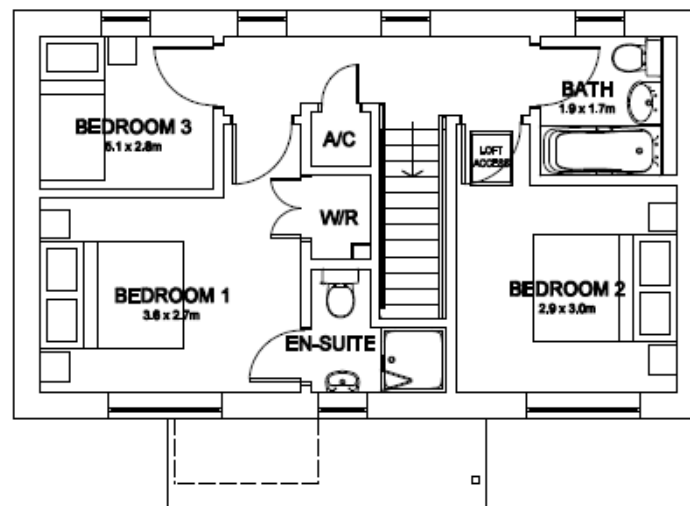
**Castell
Homes**

The 'Beacons' - £279,950



Ground Floor

Kitchen/Dining Area	Lounge Area
4.9m x 3.0m	5.1 x 2.8m
Utility Area	
2.1m x 1.6m	



First Floor

Bathroom	Bedroom 2
1.9m x 1.7m	2.9m x 3.0m
Bedroom 1	Bedroom 3
3.6m x 2.7m	5.1m x 2.8m

The floor plans depict a typical layout of the house types. For exact plot specification, details of external and internal finishes, dimensions and floor plan differences consult your Sales Executive. All dimensions are + or – 50mm and floor plans are not shown to scale.



Building homes and communities

www.castellhomes.co.uk

Tel: 03301 230 797